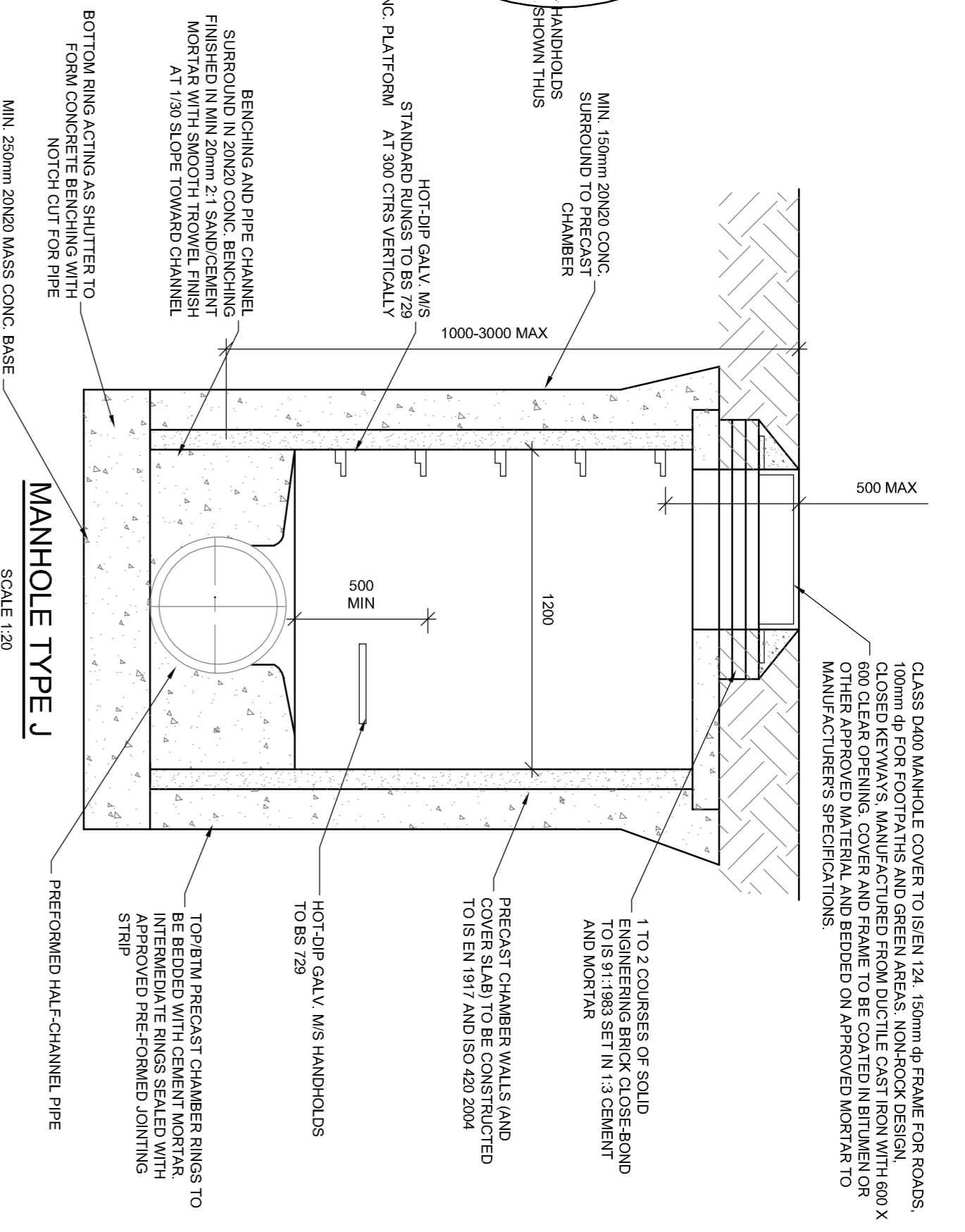
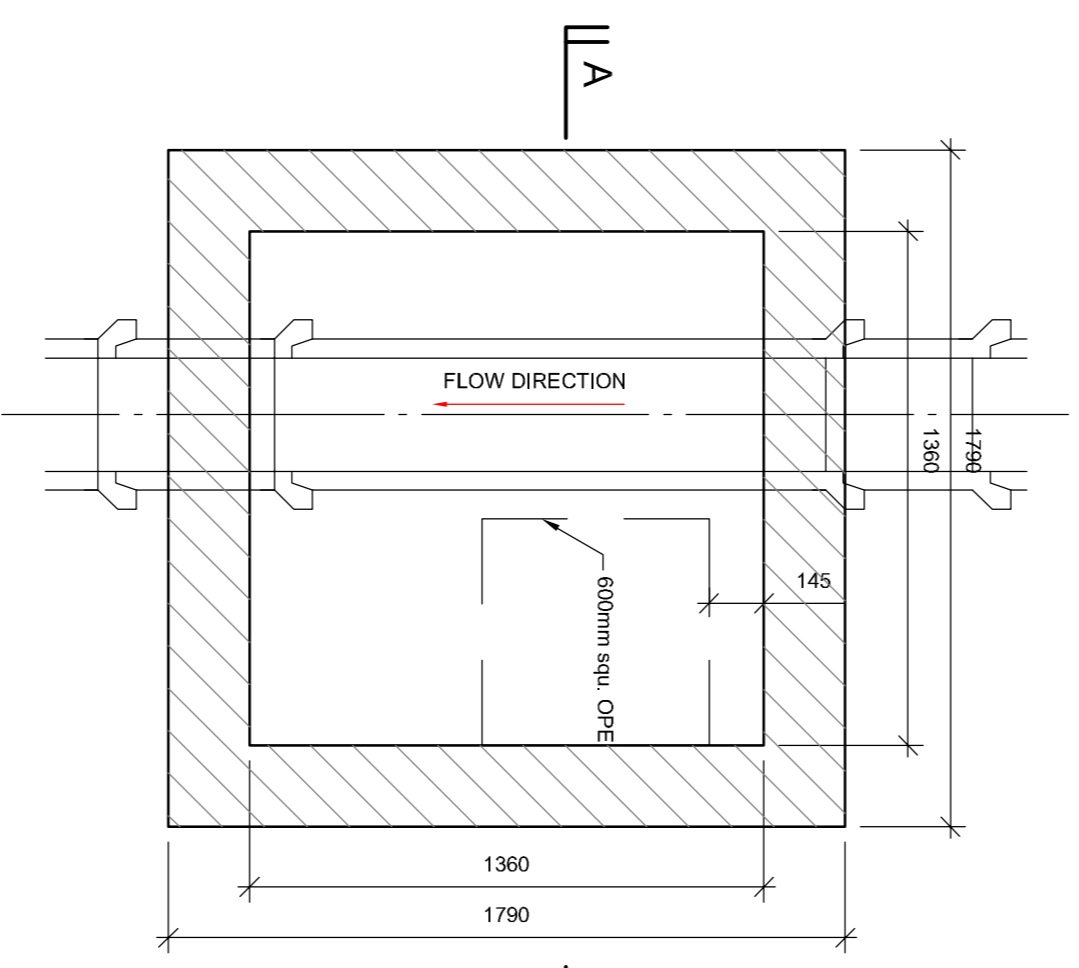


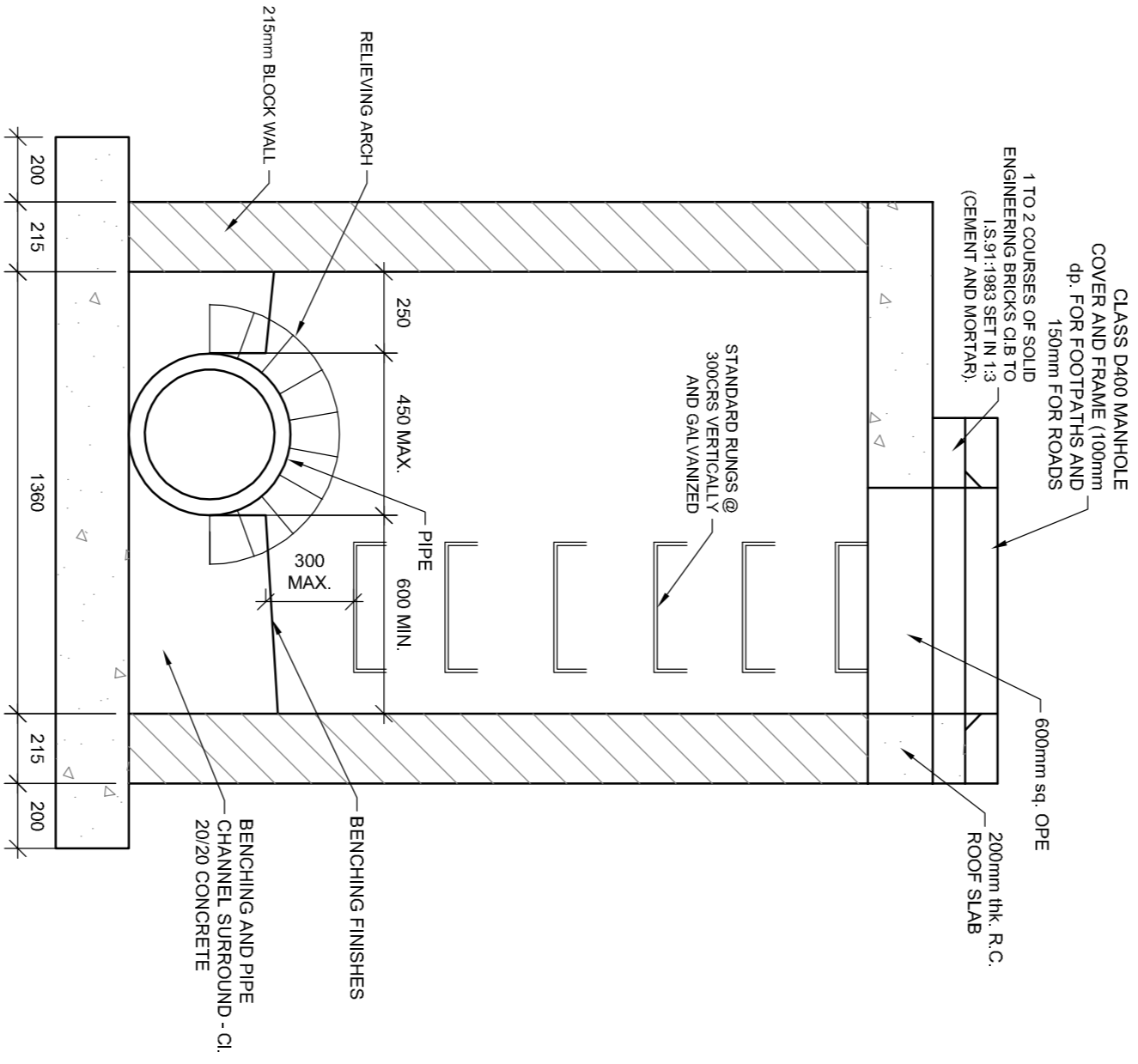
MANHOLE TYPE J
PLAN VIEW
SCALE 1:20



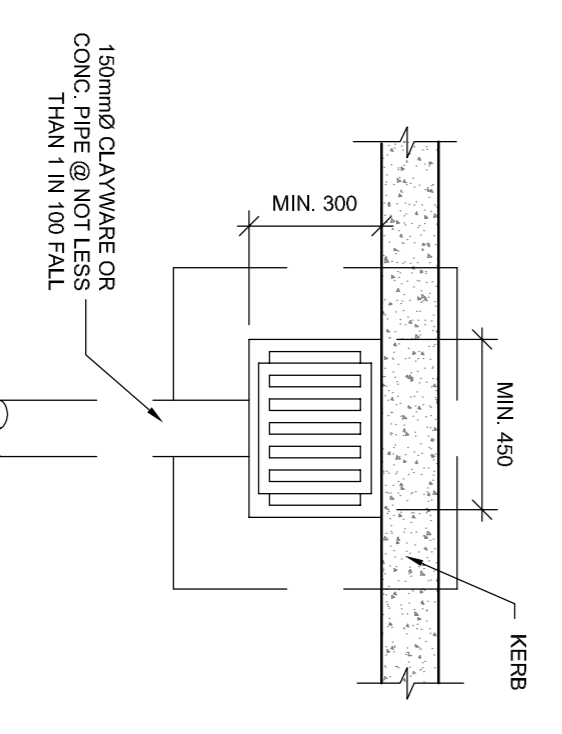
MANHOLE TYPE J
SCALE 1:20



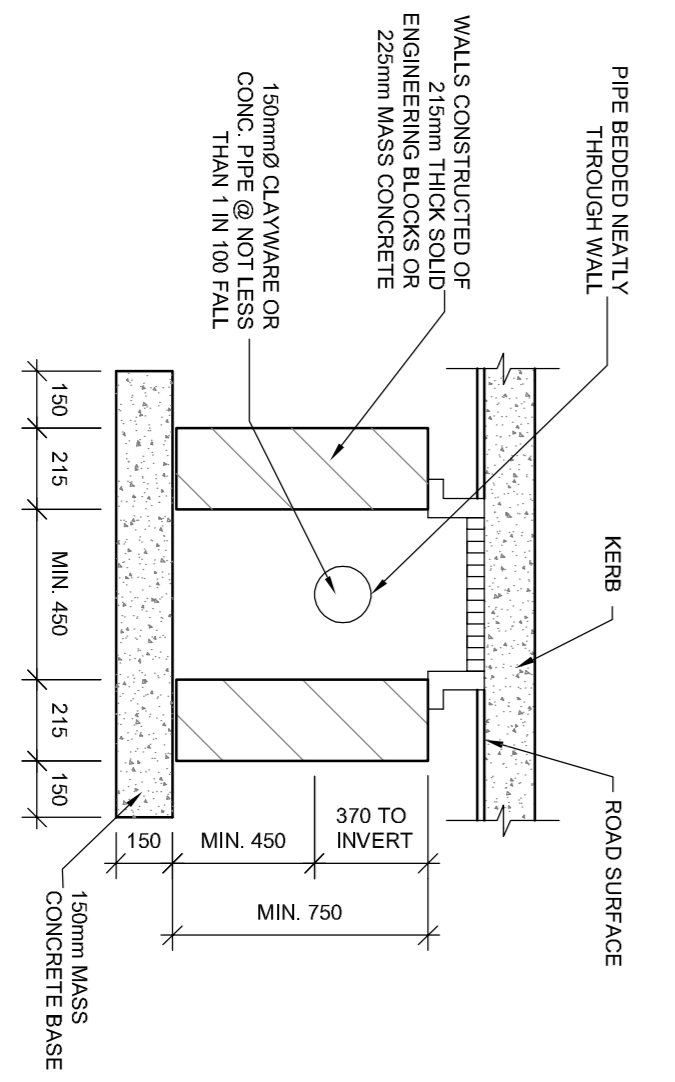
TYPE B MANHOLE
SCALE 1:20



TYPE B SECTION AA
SCALE 1:20



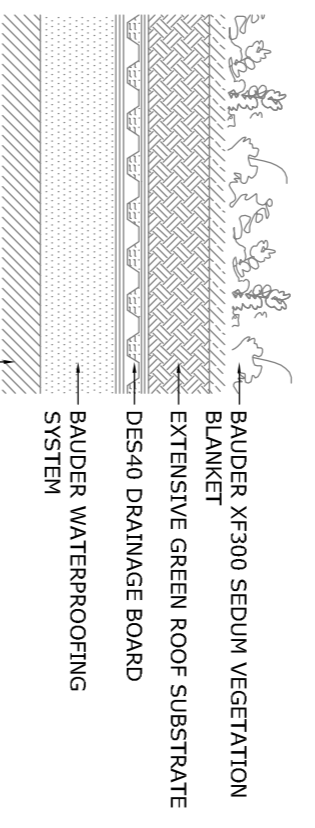
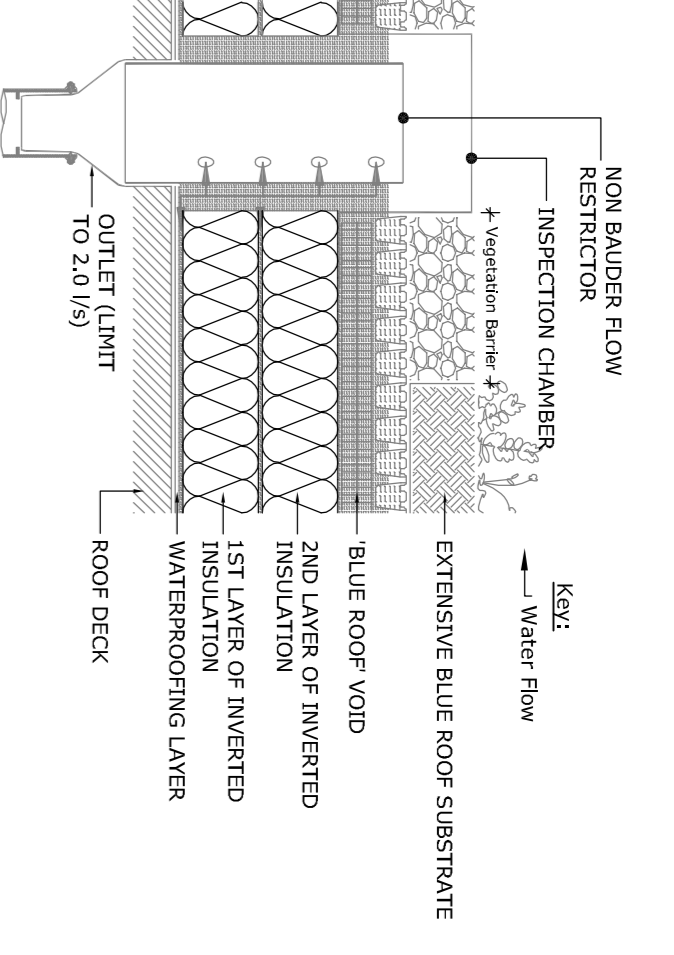
ROAD GULLY PLAN
SCALE 1:20



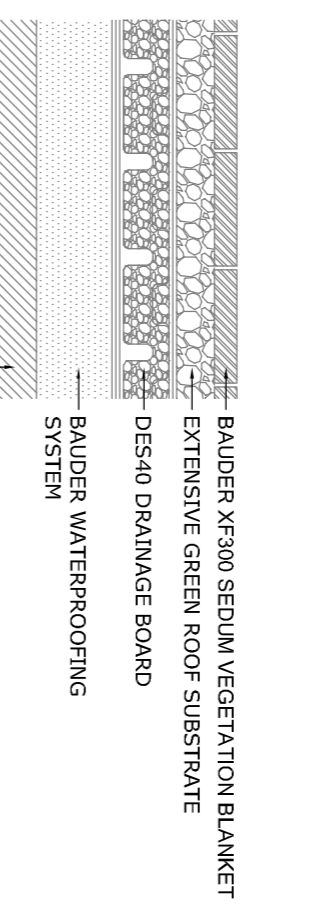
ROAD GULLY SECTION
SCALE 1:20

- NRC Guidance Notes**
- BBA, GSO and LUNA guidance recommends that Blue Roofs should be built on a concrete base. The concrete base should have no back falls from the outlet.
 - Deflections within a concrete slab often leads to water ponding. This can be avoided by positioning close to walls or pillars.
 - In a normal warm roof the insulation is dry, fully ventilated and the vapour control layer is positioned to the underside of the insulation. This is due to the performance / U Value.
 - In a normal inverted system an allowance is made for a small amount of water that makes its way through the vapour control layer, however these calculations assume no deflections in the deck that would allow ponding water.
 - In heavy rainfall the restricted flow of the outlet allows water to build up. This will quickly be as deep as the outlet. The water will then flow back between the layer of insulation. At present there is no way of calculating the U-Value for these Blue Roof systems.

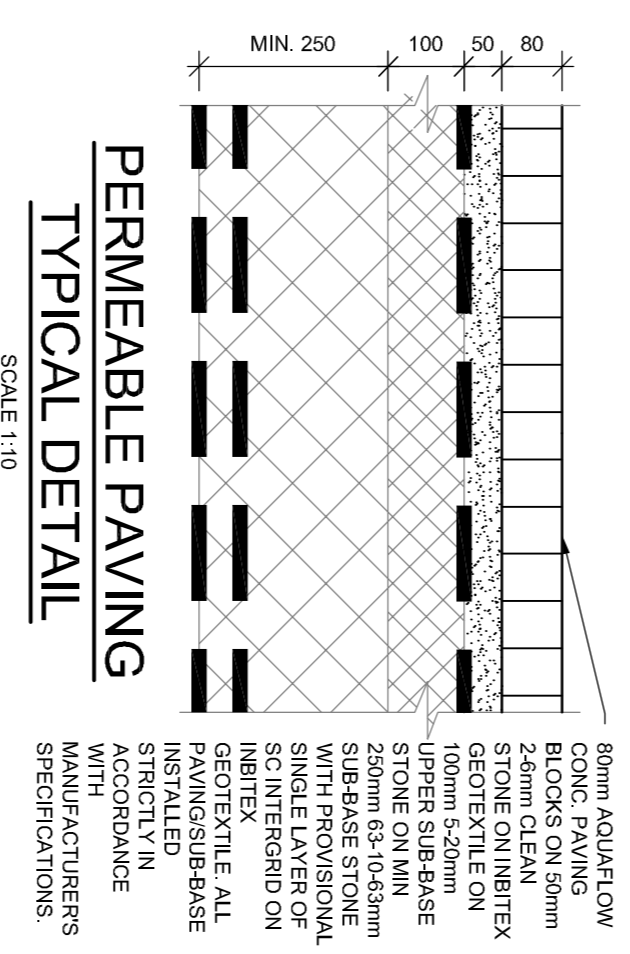
BLUE ROOF SYSTEM BY BAUDER
SCALE 1:10



SOFT LANDSCAPE EXTENSIVE GREEN PODIUM SYSTEM BY BAUDER
SCALE 1:10



HARD LANDSCAPE EXTENSIVE GREEN PODIUM SYSTEM BY BAUDER
SCALE 1:10



PERMEABLE PAVING TYPICAL DETAIL
SCALE 1:10

Rev	Date	By	Description
P	13/01/2022	D.M.	Issued for Stage 3 SHD Planning
		CKM	

LOHAN & DONNELLY
Consulting Engineers

13 Gardiner Place, Mountjoy Square, Dublin 1. T: 01 8787770
www.lohan-donnelly.com E: info@lohan-donnelly.com

Project:	Mixed-use Development at Jamesstown Road, Finglas, D11	Project No:	2038	Disc No:	C01d
Drawing:	Surface Drainage Sections and Details	Scale:	@A1	Date:	Jan 2022
Model Reference:	2038-LDE-ZZ-M2-C-0001	Model Rev.:	P01		
Drawing Reference:	2038-LDE-ZZ-00-DR-C-001d	Suitability:	S4		