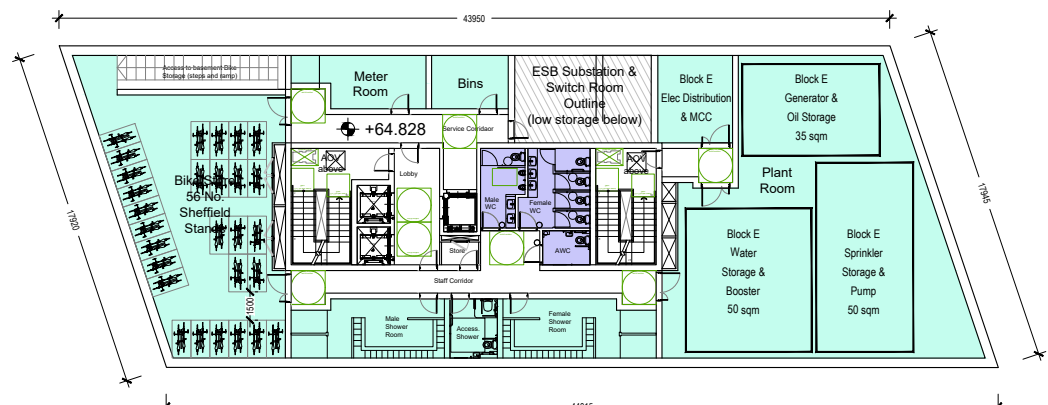


BLOCK E

- GENERAL NOTES**
1. COPYRIGHT RESERVED
 2. DO NOT SCALE DRAWING. USE FIGURED DIMENSIONS ONLY.
 3. ALL DISCREPANCIES TO BE REPORTED TO ARCHITECT.
 4. THE CONTRACTOR IS RESPONSIBLE FOR CHECKING ALL LEVELS AND DIMENSIONS.
 5. ALL STRUCTURE TO BE TO STRUCTURAL ENGINEERS DETAILS.
 6. ALL MECH & ELEC SERVICES TO SERVICES ENGINEERS DETAILS.
 7. ALL PROPRIETARY ITEMS TO BE INSTALLED IN ACCORDANCE WITH MANUFACTURERS INSTRUCTIONS.
 8. CONTRACTOR IS RESPONSIBLE FOR THE COORDINATION OF STRUCTURE FINISHES AND SERVICES.

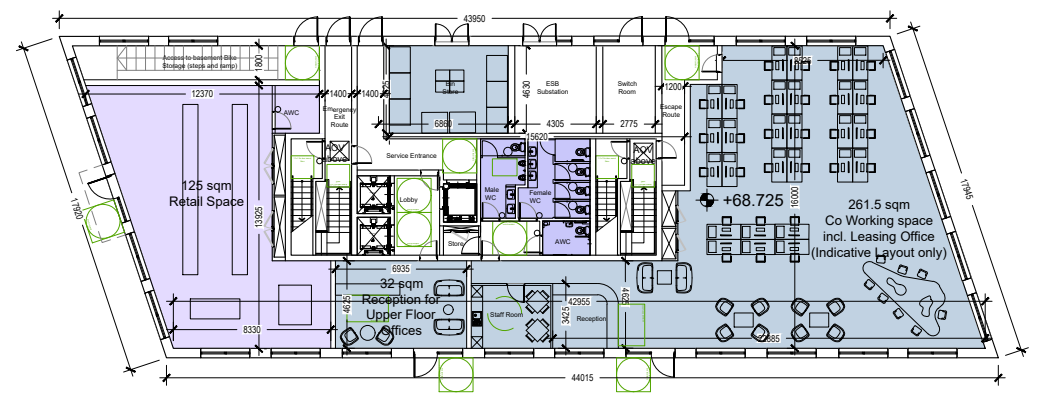
REV	DATE	DESCRIPTION	BY

*For all internal dimensions of apartment units, please refer to the JFA Housing Quality Assessment included with this submission

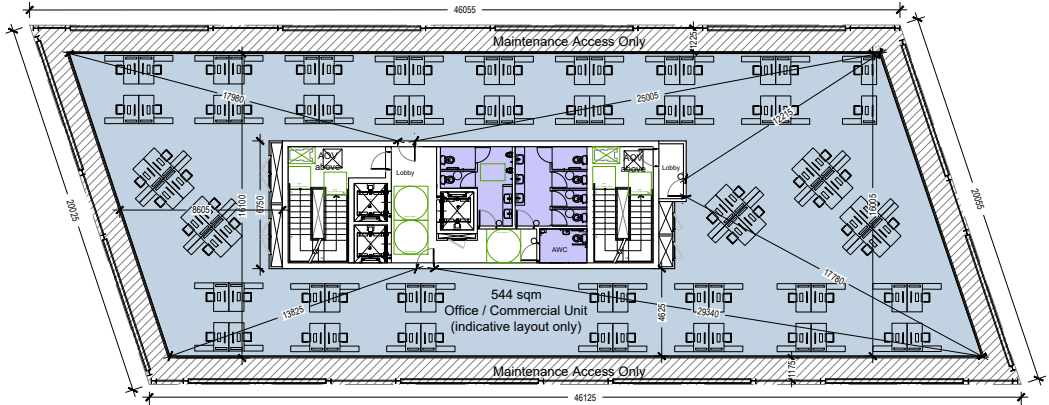


Basement Floor Plan 1:200 @ A1

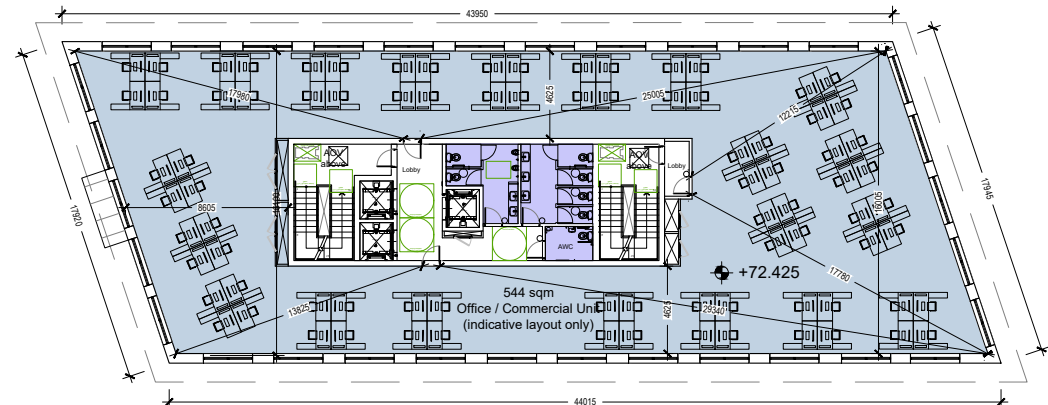
Level	Block E
Second	+76.125
Third	+79.825
Fourth	+83.525
Roof	+87.225



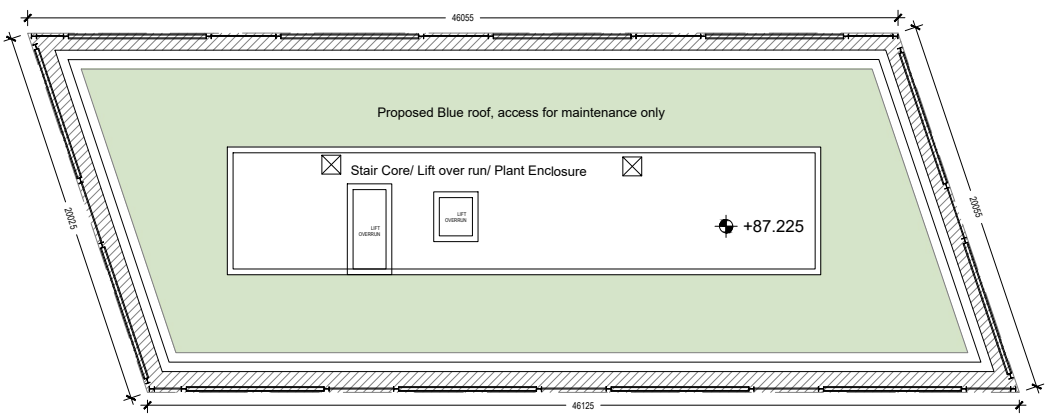
Ground Floor Plan 1:200 @ A1



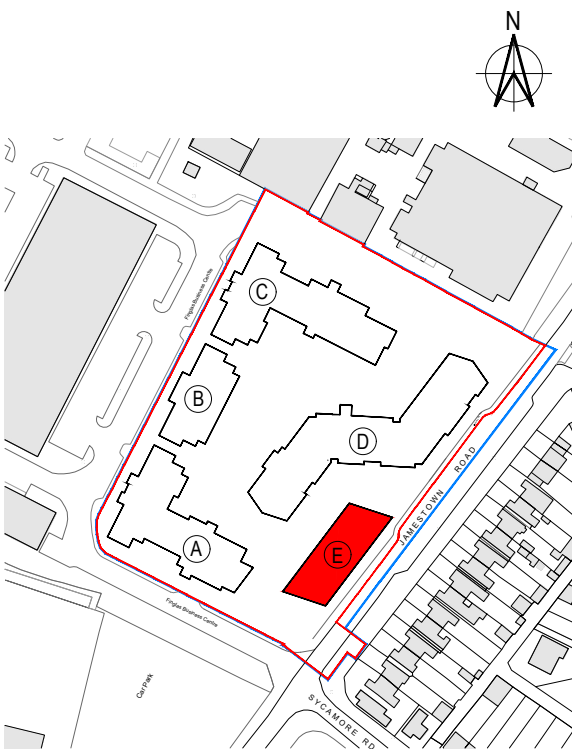
Second - Fourth Floor Plan 1:200 @ A1



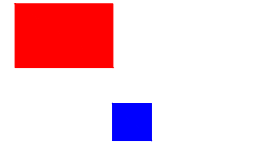
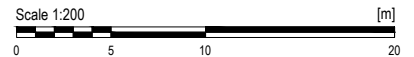
First Floor Plan 1:200 @ A1



Roof Plan 1:200 @ A1



KEY PLAN



JOHN FLEMING ARCHITECTS
 103 LEESON STREET UPPER, DUBLIN 4.
 T: (01) 5689888 E: info@jfa.ie W: www.jfa.ie

CLIENT: Jamesstown Village Limited
 PROJECT: Jamesstown Road SHD
 Mixed Use Development, Finglas, Dublin 11
 DRAWING: Block E
 Plans
 SCALE: 1:200 @ A1 JOB NO: 1873
 DRAWN BY: RM
 DATE: JANUARY 2022
 DRAWING NUMBER: JTR-ZZ-BE-DR-JFA-A-P2001 REVISION: -
 DRAWING STATUS: SHD PLANNING APPLICATION