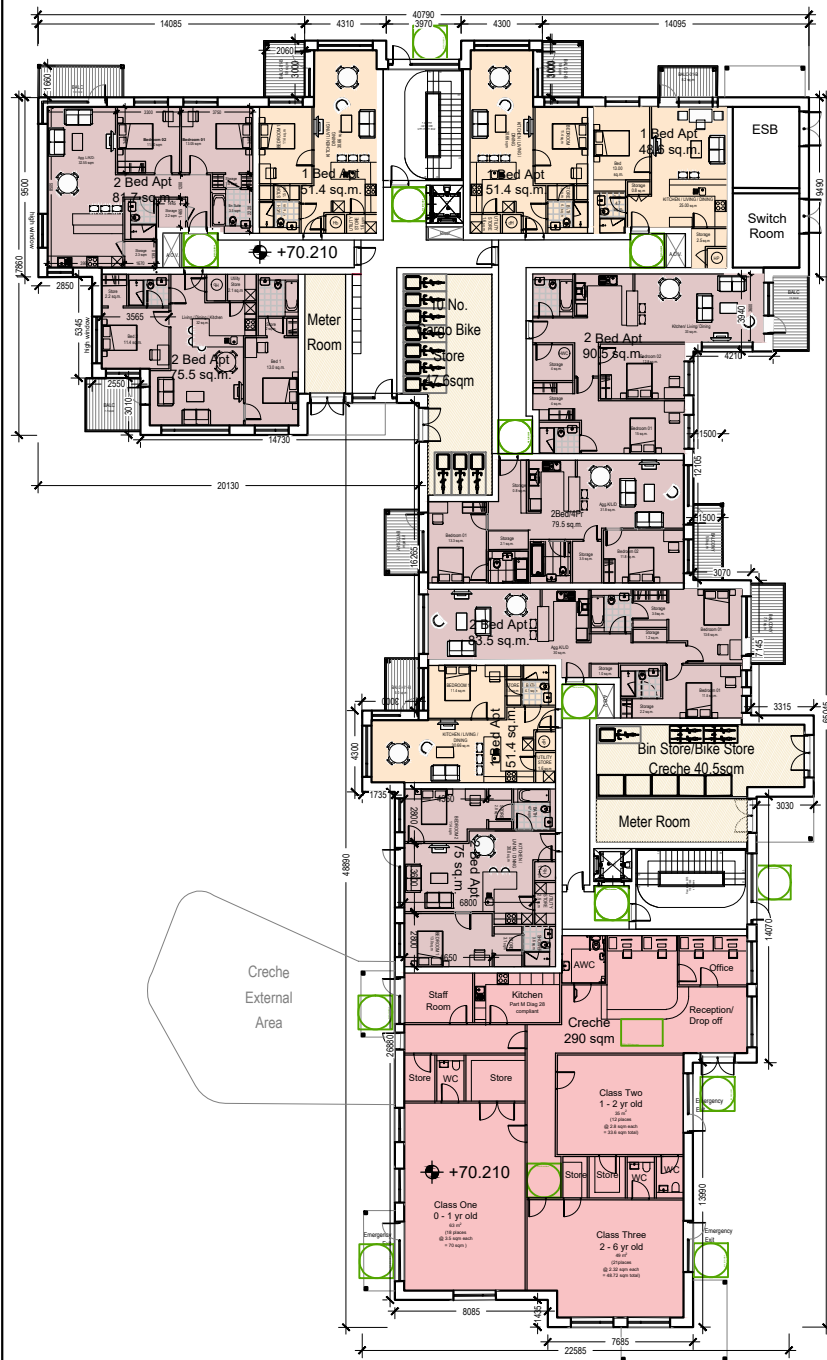


BLOCK C

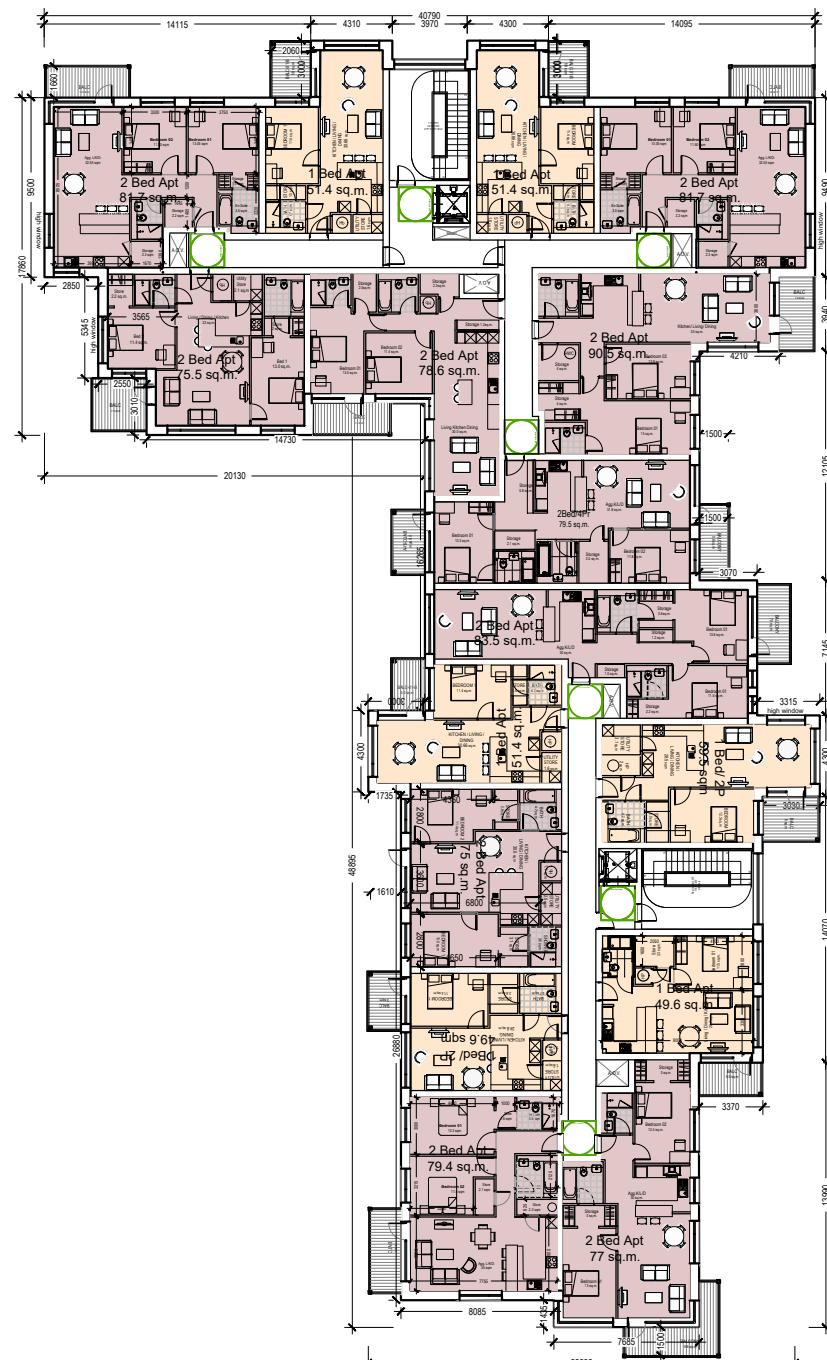
- GENERAL NOTES**
1. COPYRIGHT RESERVED
 2. DO NOT SCALE DRAWING. USE FIGURED DIMENSIONS ONLY.
 3. ALL DISCREPANCIES TO BE REPORTED TO ARCHITECT.
 4. THE CONTRACTOR IS RESPONSIBLE FOR CHECKING ALL LEVELS AND DIMENSIONS.
 5. ALL STRUCTURE TO BE TO STRUCTURAL ENGINEERS DETAILS.
 6. ALL MECH & ELEC SERVICES TO SERVICES ENGINEERS DETAILS.
 7. ALL PROPRIETARY ITEMS TO BE INSTALLED IN ACCORDANCE WITH MANUFACTURERS INSTRUCTIONS.
 8. CONTRACTOR IS RESPONSIBLE FOR THE COORDINATION OF STRUCTURE FINISHES AND SERVICES.

REV	DATE	DESCRIPTION	BY

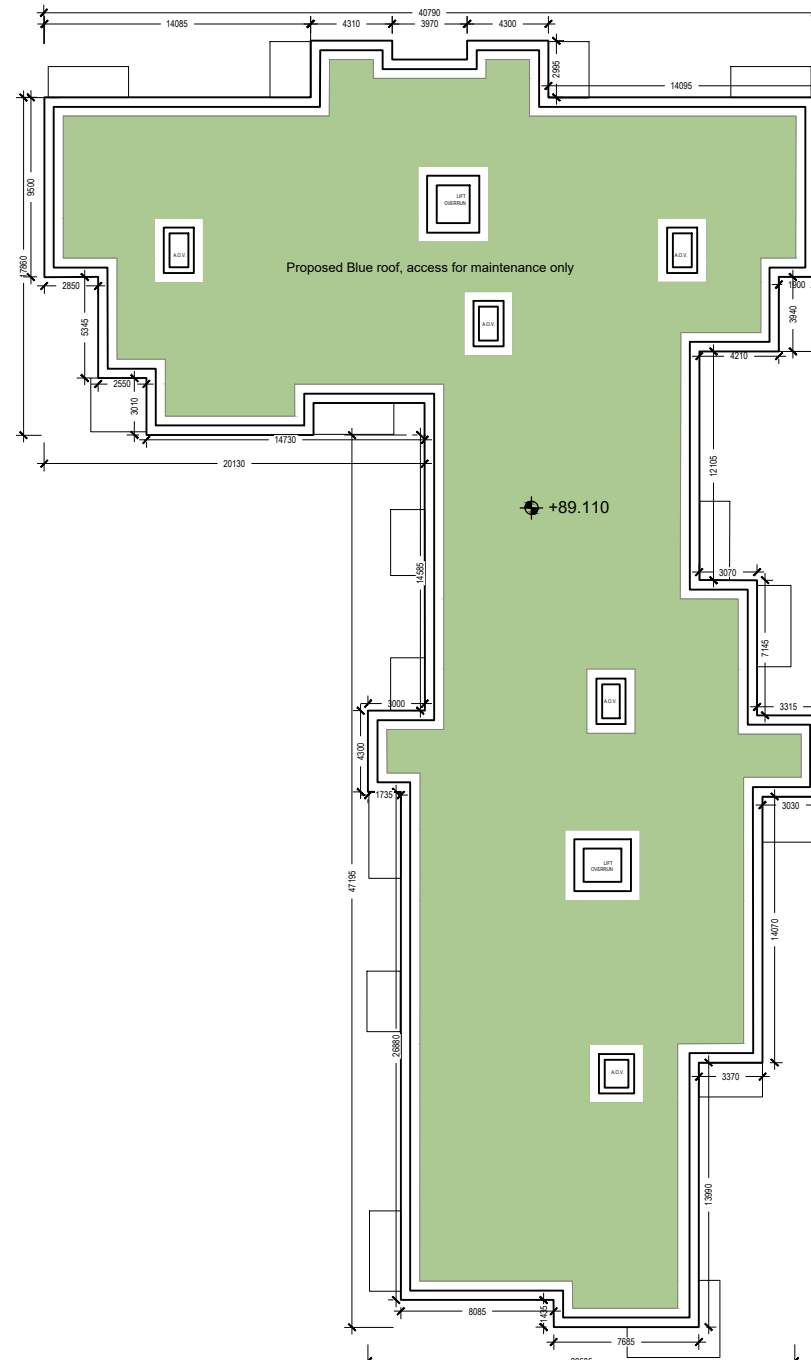
*For all internal dimensions of apartment units, please refer to the JFA Housing Quality Assessment included with this submission



Ground Floor Plan 1:200 @ A1



First - Fifth Floor Plan 1:200 @ A1



Roof Plan 1:200 @ A1



KEY PLAN



Level	Block C
First	+73.360
Second	+76.510
Third	+79.660
Fourth	+82.810
Fifth	+85.960

JOHN FLEMING ARCHITECTS
 THE TREE HOUSE, 17 RICHVIEW OFFICE PARK
 CLONSKEAGH, D14 XR82, IRELAND
 T: (01) 6689888 E: info@jfa.ie W: www.jfa.ie

CLIENT: Jamesstown Village Limited
 PROJECT: Jamesstown Road SHD
 Mixed Use Development, Finglas, Dublin 11
 DRAWING: Block C
 Plans
 SCALE: 1:200 @ A1 JOB NO: 1873
 DRAWN BY: RM
 DATE: JANUARY 2022
 DRAWING NUMBER: JTR-ZZ-BC-DR-JFA-A-P2001 REVISION:
 DRAWING LOCATION: W:\08 John Fleming\08-current drawings
 DRAWING STATUS: SHD PLANNING APPLICATION

